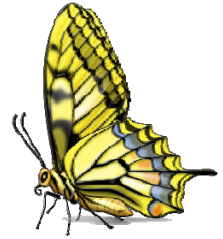




Bringing Nature Home: Sustaining Wildlife with Native Plants Dr. Douglas Tallamy



July 21, 2009 7:00 PM
Pease Auditorium, CPCC
Downtown Campus
Tickets: \$10
To order call 704-330-6534
Or <http://www.carolinatix.org>
www.habitatsteward.org
www.ncwildflower.org

“Gardening in this crowded world carries both moral and ecological responsibilities that we can no longer ignore.”

- We must change our approach to gardening and landscaping if we hope to share the spaces in which we live and work with other living things.
- By supporting a diversity of insect herbivores, native plants provide food for a healthy community of natural enemies that keep herbivores in balance.

Dr. Doug Tallamy is Professor and Chair of the Department of Entomology and Wildlife Ecology at the University of Delaware in Newark, Delaware, where he has authored 69 research articles and has taught Insect Taxonomy, Behavioral Ecology, and other courses for 28 years. His research goal is to better understand the many ways insects interact with plants and how such interactions determine the diversity of animal communities. His book “Bringing Nature Home; How Native Plants Sustain Wildlife in Our Gardens” was awarded the 2008 silver medal by the Garden Writer’s Association.

Directions to Parking for Evening and Weekend Events
From Charlottetown Avenue (formerly Independence Blvd.), proceed on 4th Street towards King’s and Uptown Charlotte. Turn right into the driveway to the second parking deck, labeled as Employee Parking and Theatre Parking. Overflow parking is available on Elizabeth Avenue across Kings towards Uptown before one crosses under I-277.



Organized with the assistance of, and sponsored by HAWK (Habitat & Wildlife Keepers), a chapter of the NC Wildlife Federation, the North Carolina Native Plant

Society and the CPCC’s Center for Sustainability

